



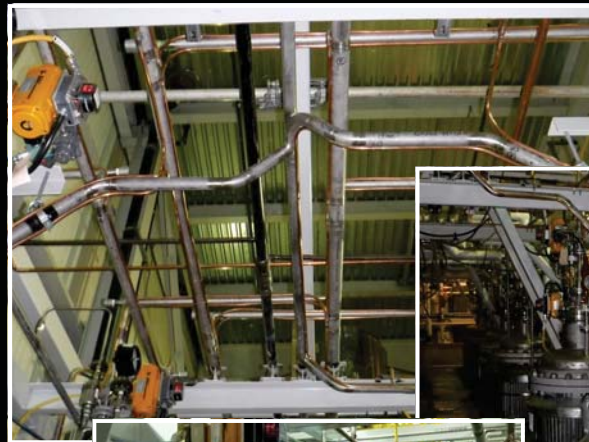
BRYMARK

Swiss Water Decaffeinated Coffee - Burnaby BC - Facility Expansion Project

Sector: Food and Beverage
Location: Burnaby BC
Owner: Swiss Water Decaffeinated Coffee
Duration: 6 Months
Completion: April 2016
Consultant: Temec Engineering Group Ltd

Project Highlights:

Brymark supported this expansion by providing General Contractor Services to expand Swiss Water's existing process production lines. Brymark opened up the building, installing new modules, vessels, several thousand feet of detailed small bore - food grade piping through out the plant, roofing, pipe insulation, instrumentation and electrical systems. Plant production was maintained during the main installation and during the facilities scheduled shutdown Brymark completed the tie - ins of all the systems.



Brymark Installations Group Inc.

1648 Broadway Street, Port Coquitlam BC

Tel: 604 944 1206

www.brymarkgroup.com

CARLSON
CONSTRUCTION GROUP