

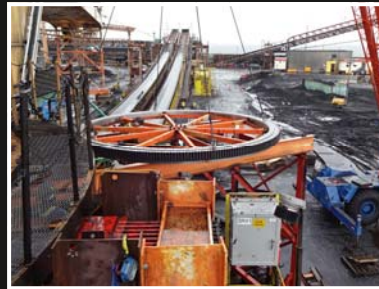


Westshore Terminals - Stacker SR41 Slew Bearing Replacement Project

Sector: Ports and Terminals
Location: Roberts Bank Delta, BC
Owner: Westshore Terminals LP
Duration: 1.5 Months
Completion: October/November 2014
Consultant: EMS -Tech Inc.

Project Highlights:

Late fall 2014 Westshore Terminals contracted Brymark for the removal and replacement of the Slew Bearing in one of their front line stacker reclaimers. Brymark quickly mobilized, prepared the stacker for disassembly and worked around the clock to remove and replace the slew bearing. In short order Brymark efficiently restored the stacker back into production obtaining the shortest outage possible.



Brymark Installations Group Inc.
 1648 Broadway Street, Port Coquitlam BC
 Tel: 604 944 1206
 www.brymarkgroup.com

